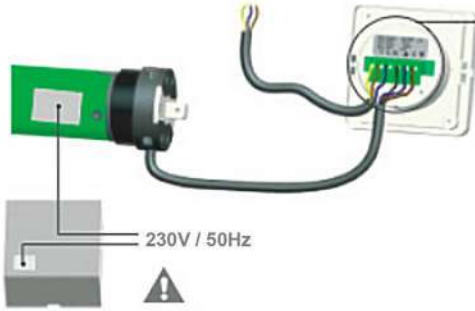


### 1 CONNECT THE SWITCH

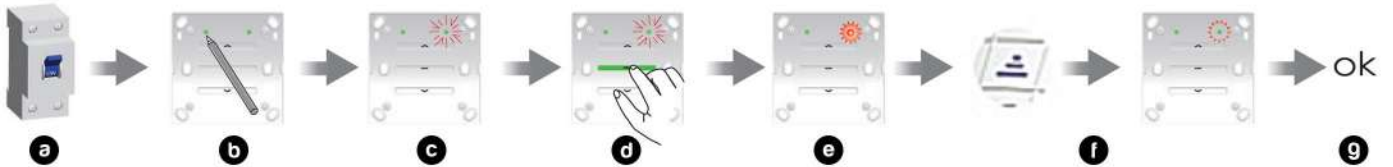


Connectors supplied for secure connection.

! Each button step must be completed within 10 seconds.

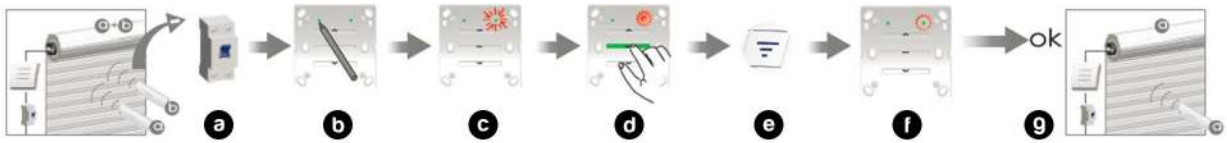
**Note:** If motor direction and buttons are inversed, switch brown and black cables from the motor.

### 2 ADD A REMOTE



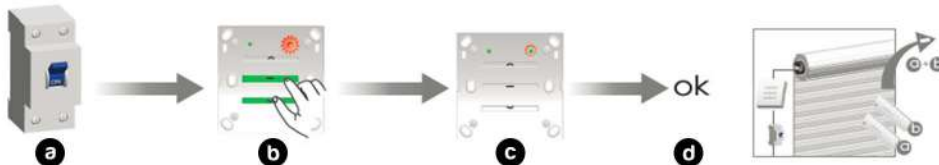
- a Turn on and remove the switch cover.
- b Press top left button (programming).
- c Top right LED flashes.
- d Press the **Stop** button.
- e LED long flashes.
- f Press **Up** button on remote control.
- g LED flashes and stops, remote is now paired.

### 3 DELETE ONE RECEIVER CHANNEL



- a Turn on.
- b Press top left button (programming).
- c Top right LED flashes.
- d Press **Stop** button, LED long flashes.
- e Press **Down** button on remote.
- f LED flashes and stops.
- g Receiver successfully unpaired.

### 4 DELETE ALL RECEIVER CHANNELS



- a Turn on.
- b Press **Stop** and **Down** buttons simultaneously for 6 seconds.
- c LED flashes and stops.
- d All channels deleted.

### 5 SWITCH AC282 ADVANTAGES

- Integrated remote control.
- Control your wired switch motor roller shutters remotely.
- Corresponds to standard installation diameters.