

**1 MOTOR INSTALLATION**



- a** Position the wheel and crown adapters on the motor.
- b** Secure the wheel adapter on the 90° pin.
- c** Measure the motor (from motor head to wheel adapter).
- d** Mark the measurements on the roller tube, insert motor and fix with a screw.

**2 MOTOR POSITIONING**

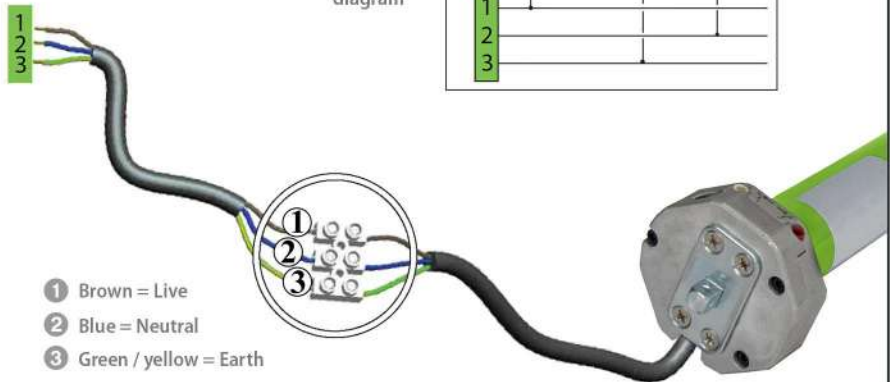
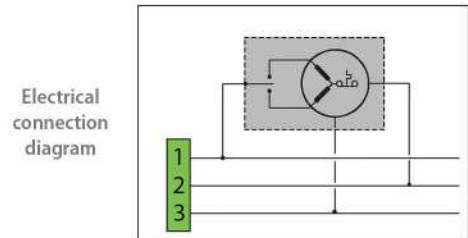
- a** Position the motor support brackets.
- b** Fasten the motor support either with an M6 or M8 screw (not included) or with a threaded rod (pre-drilling required).
- c** Position the roller shutter barrel and close the roller shutter box.

Depending on the type of assembly, there are additional motor brackets. These are sold separately.

**3 WIRING**



Disconnect the power supply before connecting the motor.



- 1** Brown = Live
- 2** Blue = Neutral
- 3** Green / yellow = Earth

## 4 PROGRAMMING

### Pairing:

- Turn off the power supply off, wait 5 seconds and turn it back on. A long beep and a vibration are emitted.
- Press **P2** button on the remote control once, then a second time and finish with the **Up** button on the remote control.  
A beep sounds after each step and a motor vibration signals the remote control is now paired.

### Additional remote controls:

- Press **P2 P2** button 2 times on the original remote control. 1 beep and 1 motor vibration are emitted.
- Press **P2 P2** on the new remote control. Several beeps and 1 motor vibration are emitted, the new remote is now paired.

### Unpairing - factory reset:

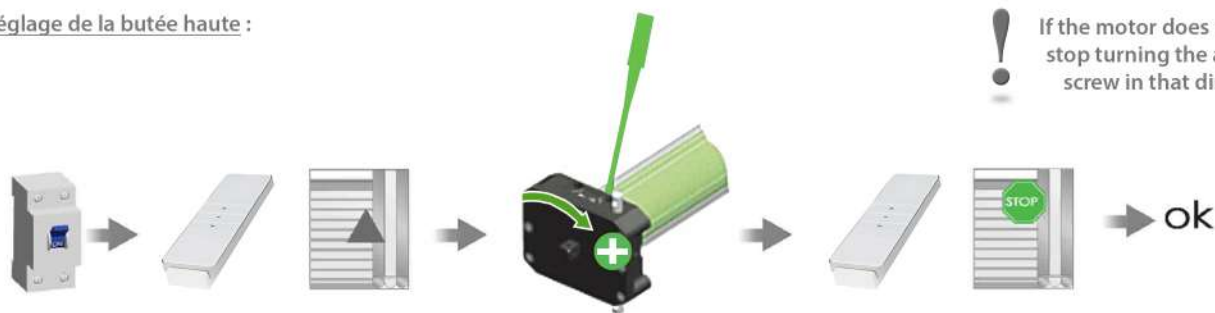
Unpairing one remote removes all associated remotes from the motor.

Press **P2 / Stop / P2** buttons on any paired remote. A series of consecutive beeps will sound.

The controls are no longer associated with the motor.

## 5 RÉGLAGE DES BUTÉES DE FINS DE COURSE

### Réglage de la butée haute :



! If the motor does not move, stop turning the adjusting screw in that direction.

- Turn on the power to the roller shutter. The motor moves briefly.
- Press the **Up** button once and wait for slat curtain to reach the top. Press **Stop** if the motor doesn't stop automatically where required and turn the adjustment screw five times (or more if necessary) in the - direction.
- Adjust the stop position by turning the same adjustment screw in the + direction.  
The motor will move up to the required upper stop limit position.
- Set the lower stop limit in the same way.

**Note :** Alternatively, you can remove the slat curtain clips from the roller barrel, press **Down** and let the motor rotate until it stops. Like this, the lower stop limit position is set quickly. You can then reattach the shutter curtain to the roller barrel and set the upper limit position.

## 6 TROUBLESHOOTING

- The motor does not respond :**  
Make sure the power is on and all cables are correctly connected.
- The motor makes an abnormal noise :**  
Make sure that the motor can move freely and nothing interferes with it's movement (screw head, displaced slats, etc).
- The motor was working but no longer responds :**  
The motor has thermal protection in the event of overheating, wait 10-15 minutes and try again.
- The motor does not stop :**  
Make sure that the wheel and crown adapters are correctly attached.
- The motor stops during the operating process :**  
Repeat setting the stop limit positions.
- The motor turns in the wrong direction :**  
Press **P2** 2 times on the remote control. This sequence must be done in under 10 seconds.  
Press the **down** button once.  
The direction of rotation has been changed.