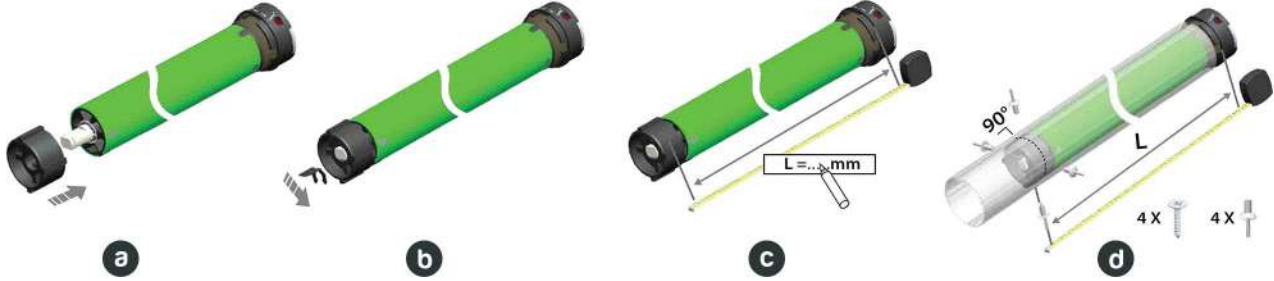


1 MOTOR INSTALLATION



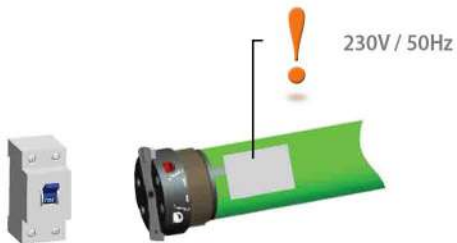
- a** Position the wheel and crown adapters on the motor.
- b** Secure the wheel adapter on the 90° pin.
- c** Measure the motor (from motor head to wheel adapter).
- d** Mark the measurements on the roller tube, insert motor and fix with a screw.

2 MOTOR POSITIONING

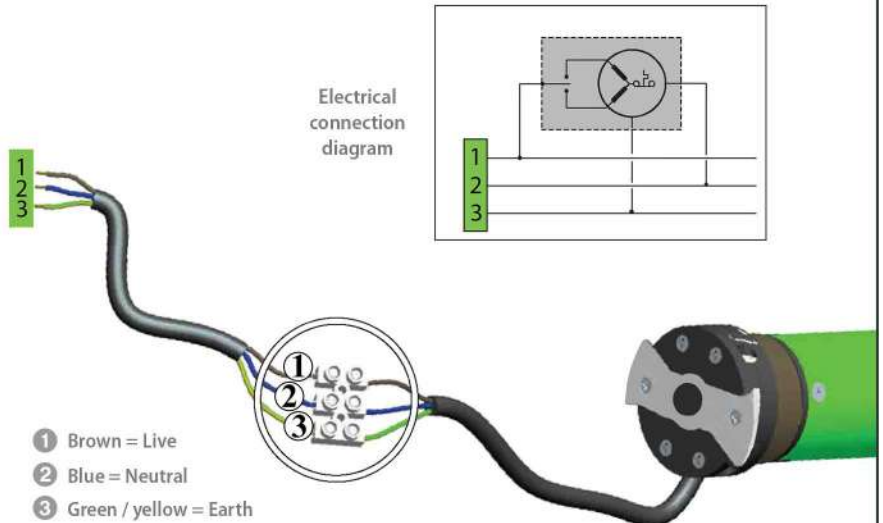
- a** Position the motor support brackets.
- b** Fasten the motor support either with an M6 or M8 screw (not included) or with a threaded rod (pre-drilling required).
- c** Position the roller shutter barrel and close the roller shutter box.

Depending on the type of assembly, there are additional motor brackets. These are sold separately.

3 WIRING



Disconnect the power supply before connecting the motor.



4 PAIRING REMOTE CONTROL

Please refer to the instruction manual of your remote control.

5 SETTING STOP LIMITS

Set the upper limit:



! If the motor does not move, stop turning the adjusting screw in that direction.

- Turn on the power to the roller shutter. The motor moves briefly.
- Press the **Up** button once and wait for slat curtain to reach the top. Press **Stop** if the motor doesn't stop automatically where required and turn the adjustment screw five times (or more if necessary) in the - direction.
- Adjust the stop position by turning the same adjustment screw in the + direction. The motor will move up to the required upper stop limit position.
- Set the lower stop limit in the same way.

Note: Alternatively, you can remove the slat curtain clips from the roller barrel, press **Down** and let the motor rotate until it stops. Like this, the lower stop limit position is set quickly. You can then reattach the shutter curtain to the roller barrel and set the upper limit position.

6 TROUBLESHOOTING

- The motor does not respond :**
Make sure the power is on and all cables are correctly connected.
- The motor makes an abnormal noise :**
Make sure that the motor can move freely and nothing interferes with it's movement (screw head, displaced slats, etc).
- The motor was working but no longer responds :**
The motor has thermal protection in the event of overheating, wait 10-15 minutes and try again.
- The motor does not stop :**
Make sure that the wheel and crown adapters are correctly attached.
- The motor stops during the operating process :**
Repeat setting the stop limit positions.
- The motor turns in the wrong direction :**
Press **P2** 2 times on the remote control. This sequence must be done in under 10 seconds.
Press the **down** button once.
The direction of rotation has been changed.