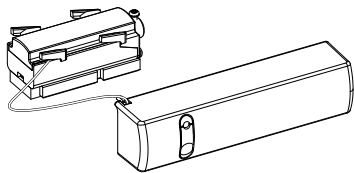


Manual
Tiltmotor Venetian 19 - 25 mm
ABC-02



coulisse

WARNING: Important safety instructions. Follow all instructions, since incorrect installation can lead to severe injury.

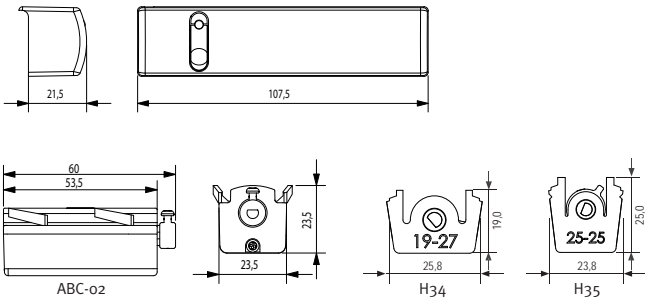
WARNING: Do not make repairs yourself. Do not attempt to open the device or disassemble it. You run the risk of electric shock and voiding the limited warranty. No user-serviceable parts are inside.



1. General information

The ABC-02 is a complete kit to motorize the tiltfunction in 25mm venetian blinds. The kit fits in all common headrails (25x25mm and 19x27mm). The motorunit is placed in the headrail, the batterypack is placed with magnets outside the headrail for easy battery access. The motorunit is operated with a Coulisse remote control only.

1.1 General dimensions

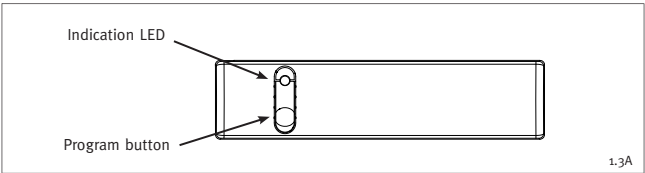


1.2 Specifications

ABC-02	
Battery type	4x AAA 1.5v alkaline (not included)
Battery life	1 year
Max. system dimensions	25mm venetian, 2,5m²(wood) - 4,5m²(alu)
Operating temperature	5 - 60°
Max. channels to pair	32 channels

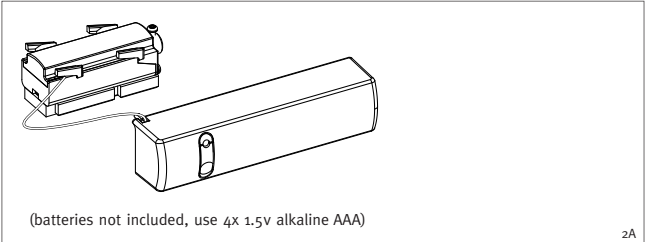
1.2A

1.3 Interface and buttons



1.3A

2. Assembly

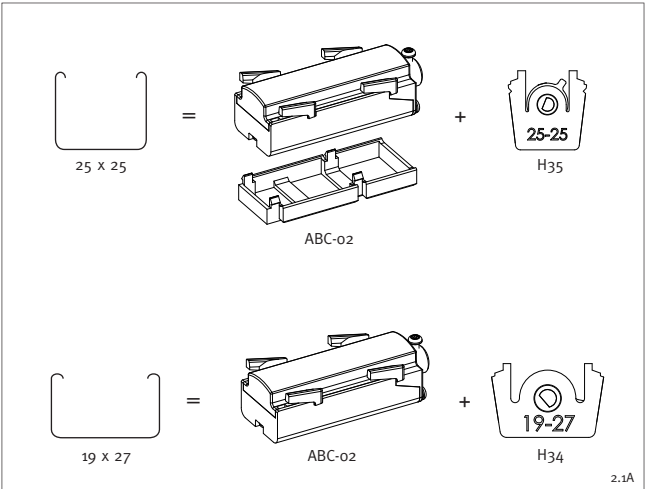


(batteries not included, use 4x 1.5v alkaline AAA)

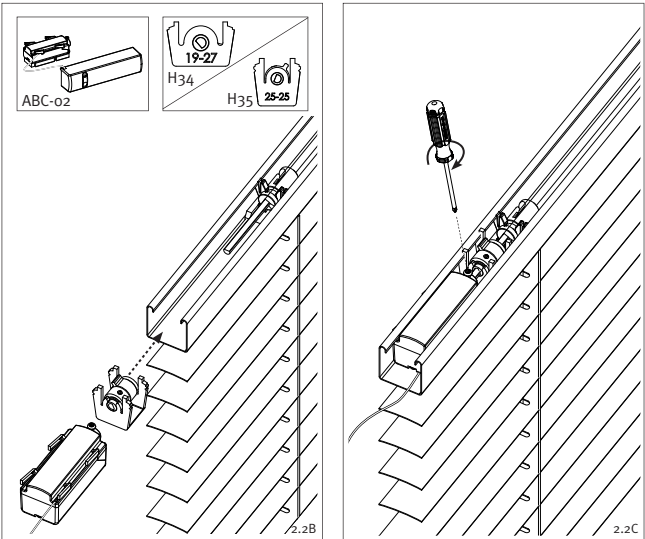
2A

ABC-02

2.1 Install Motor

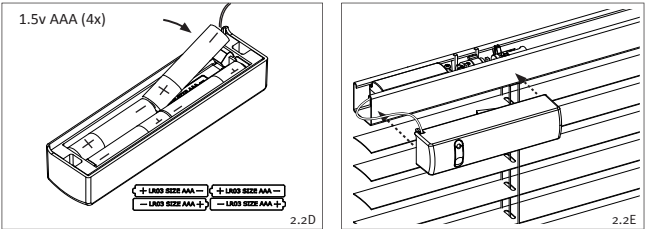


2.1A



2.2B

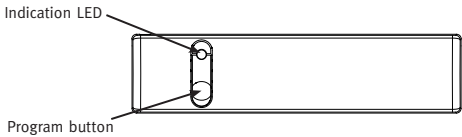
2.2C



2.2D

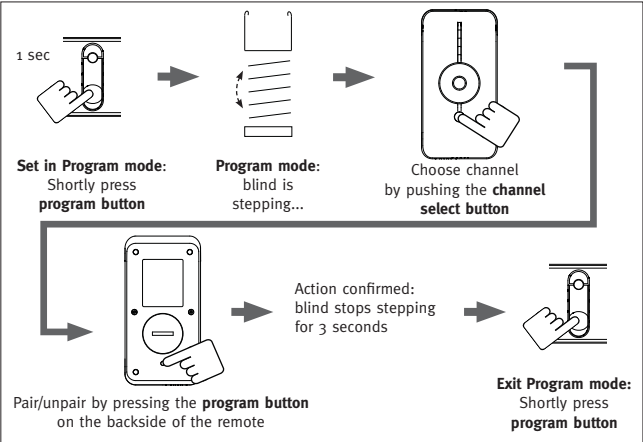
2.2E

3. Programming and operation

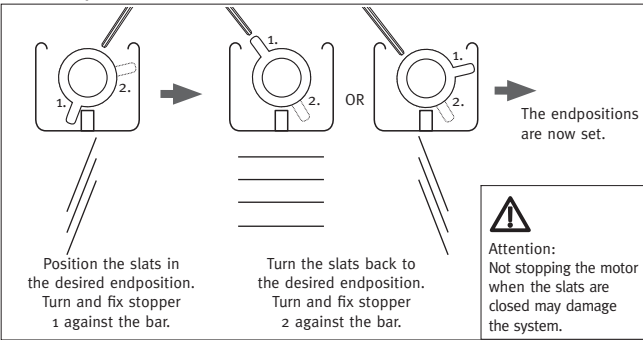


3.1 First use

- Pair to a channel/remote (also possible by using 'single select', see manual remote control*)

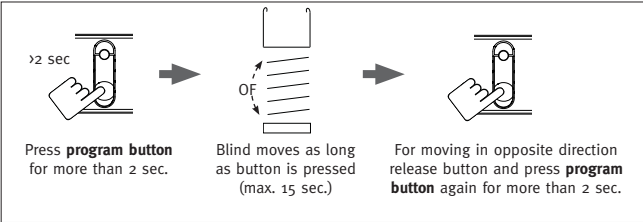


3.2 Set endpositions



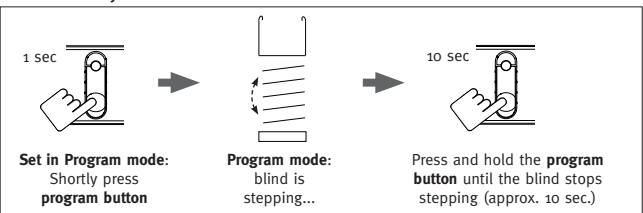
3.3 Normal use

- Manual Control

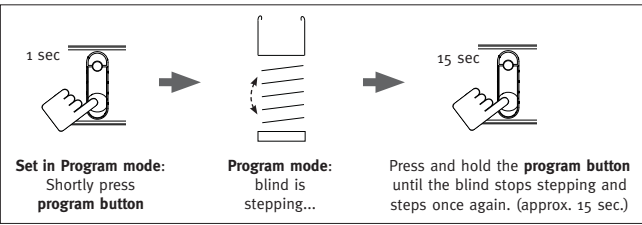


3.4 Reset

- Reset to factory defaults



- Reset to factory defaults & Erase all paired channels/remotes



3.4 Additional blind settings

Additional blind settings:	Available
Switch rotation direction	Yes
Favorite position	No
BatteryMode	Yes

The ABC-02 is not compatible with the ABC-19 Domoticabox.

We refer to the manual of the Coulisse Remote control to program the additional blind settings.

4. Tips & Troubleshooting

Please check www.coulisse.nl for the latest tips and troubleshooting guide.

5. Safety & Cleaning

5.1 Safety

WARNING: Do not make repairs yourself. Do not attempt to open the device or disassemble it. You run the risk of electric shock and voiding the limited warranty. No user-serviceable parts are inside.

- Do not let children play with the blind and/or remote control.
- Only use powersupplies or batteries that comply with the specifications on the motor.
- In case of malfunction, unplug the device or remove the batteries and contact your dealer.
- Take care that the blind can move freely and is not blocked by objects.
- Take care that the powersupply cable is out of reach for children.
- Do not paint the device.
- Keep the device dry .

5.2 Cleaning

Follow these general rules when cleaning the outside of the device and its components:

- Make sure the device is unplugged.
- Use a damp, soft, lint-free cloth. Avoid getting moisture in openings.
- Don't use aerosol sprays, solvents, alcohol, or abrasives.

6. Service & Support

WARNING: Do not make repairs yourself. Do not attempt to open the device or disassemble it. You run the risk of electric shock and voiding the limited warranty. No user-serviceable parts are inside.

Online Resources

For the latest information and updated manuals go to www.coulisse.nl.

Obtaining Warranty Service

First follow the advice in this booklet and then go to your local dealer. If the product appears to be damaged or does not function properly, go to your local dealer for instructions on how to obtain warranty service.

Disclaimer:

© Copyright Coulisse

All rights reserved. No part of this publication may be reproduced, stored in a retrieval system, or transmitted, in any form, by any means, electronic, mechanical, photocopying, recording, digital or otherwise without the written permission of the publisher.

Although this manual has been composed with the most care, Coulisse B.V. does not accept any responsibility for damage due to mistakes and/or faults in this manual.

Coulisse B.V. reserves the right to revise the manual and to revise and/or changes its content at any time, without obligation to notify any person or entity of such revisions or changes.

The most recent version replaces older versions of this manual. The most recent version is available at www.coulisse.nl or contact your Coulisse contact person .

We invite you to send remarks and comments about this manual to Coulisse at manuals@coulisse.nl.

coulisse

Coulisse B.V., Vonderweg 48, 7468 DC Enter, The Netherlands